



workflow management SUITE for PRODUCTION

BuilderMT and Timberline® Software developed a customized suite of products to manage the day-to-day process of a builder. This suite of products, the Workflow Management Suite, aids in the efficient communication of information across the organization.

The Workflow Management Suite includes applications designed specifically to help production builders control construction costs, efficiently produce and manage high volumes of purchase orders and subcontracts, coordinate job site activity, and share information with sales centers and other areas in the organization. Included are Purchasing, Scheduling, Wireless Scheduling and Sales Pricing.

Features and efficiencies.

- Define which plans and options are available by community and determine markups using percentages, lump sum, and market values.
- Efficiently generate, track and streamline the approval of all purchase orders, subcontracts, change orders, and payments.
- Develop and update project schedules in the office and in the field via a handheld device, and send project notifications to subs and suppliers automatically via fax or e-mail.
- Monitor all construction costs, analyze profits and variances, and identify models and options needing adjustment through inquiries and reporting.
- Set and maintain sales model and option pricing, and evaluate costs, projected growth and net margin by plan, elevation, and option.
- Integrate with other builder-related software to address warranty and sales automation needs.

Purchasing.

The Purchasing application optimizes business processes while integrating your estimating and accounting.

Generate budgets and purchase orders directly into Timberline Office®, Job Cost. Optimize business practices, including: profit analysis, cost control, change order tracking, variance cause analysis, payment processing, custom reporting, labor and sub-trade cost management, and more.

Scheduling.

With the Scheduling application, superintendents in the field are able to keep accurate construction schedules and have the information on-hand to reduce costly errors and maintain consistent cycle times.

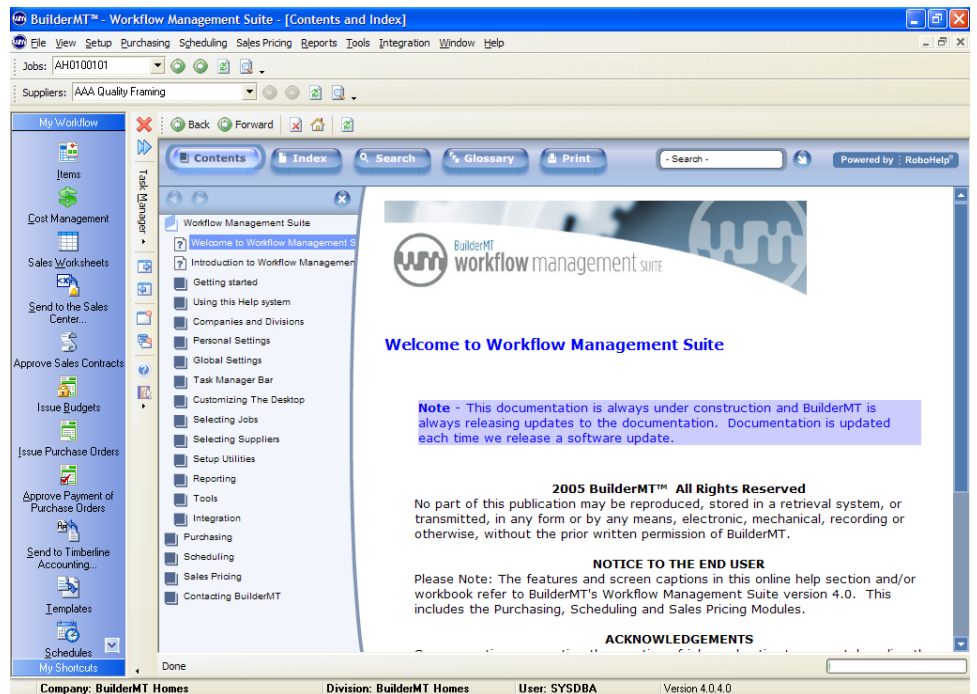
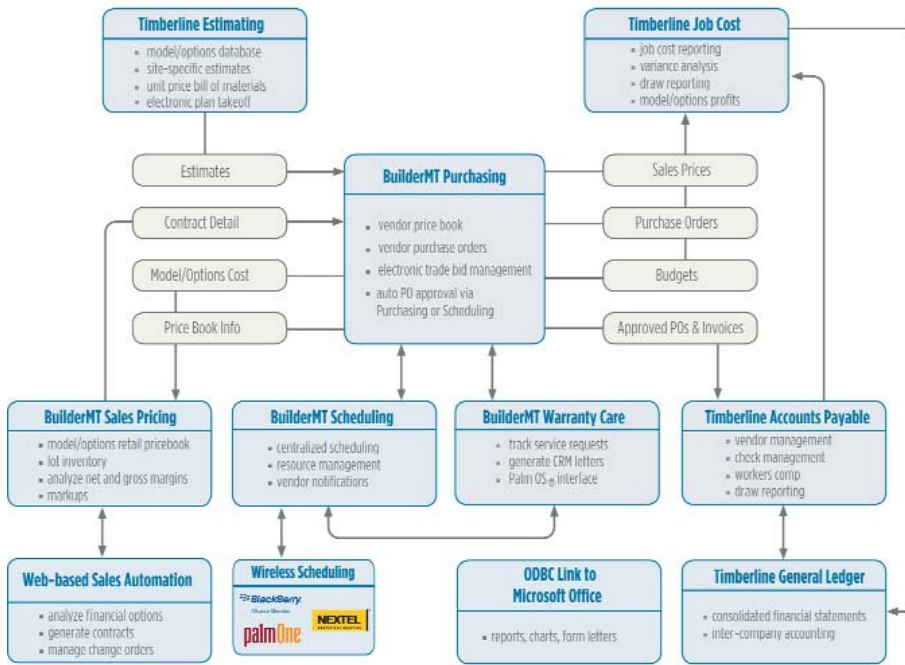
Wireless Scheduling provides users of handheld devices with a fingertip information system allowing superintendents to monitor, control, and communicate daily construction activities.

Sales Pricing.

The Sales Pricing module is used to create retail sales pricing for various models and options, and communicate this information to sales offices.

Directly access community information, lot inventory, community-specific retail pricing of models and options, buyer contact details, contract information, and more.

Workflow for Production Builders



Workflow Management Suite is developed and supported by BuilderMT. It is also referred to as the Timberline Office production management suite of products, fully integrated financial and operations software for construction and real estate professionals.